

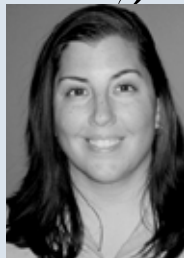
ANTHROPOLOGY PROGRAM TO

Playa del Carmen MEXICO

JUNE 15 – JULY 8, 2009,
23 DAYS, 21 NIGHTS



Program Faculty



Jessica Amato has lived, traveled, and worked in the Yucatán peninsula of Mexico for the past eight years, most recently as a Fulbright Scholar in Anthropology and visiting fellow with the U.S.-Mexico Commission for Educational and Cultural Exchange (COMEXUS). As a cultural anthropologist with specific interest in Mesoamerican culture and art/archaeology, her work has brought her in close contact with all of the archaeological sites of the Yucatán, as well as Maya language and culture. Currently, she is a professor of anthropology and geography at Napa Valley College and the coordinator of the Yucatán Study Abroad Program.

Itinerary-at-a-glance

Day 1 – Monday, June 15:

Depart San Francisco

Depart late this evening from San Francisco International Airport for Cancun via Mexicana Airlines, with a change of planes in Mexico City.

Day 2 – Tuesday, June 16:

Arrive Cancun

Arrive into Cancun in the late morning. Upon arrival, the group will be transferred to El Estudiante where the host family will pick-up the student and take him/her home. Dinner will be offered this evening.

DAY 3 – 22 – Wednesday, June 17 – Tuesday, July 7:

Anthropology Coursework

Breakfast and dinner are included at the home stay accommodations. During this time, the students will take Anthropology courses at the El Estudiante Language School for 4.5 hours per day, Monday through Friday. Note: Anthropology coursework will include field-based investigations.

During your stay in Playa Del Carmen, one class per week each of salsa dancing and cooking class will be offered.

Also during this time, instruction will be enhanced by three full-day excursions to Chichen Itza, Tulum and Coba.

A full day to the Yucatan's most famous and best restored Mayan site, Chichen Itza. The tour should be one of the highlights of your program. This massive site (which occupies four square miles) was believed to have been founded during the 9th century A.D, but its origins according to historians could be either Toltec or Mayan. Be sure to witness the wonder of Mayan astronomical accuracy in the descent of the Feathered Serpent at the great pyramid of Chichen Itza. Lunch will be included en route. Also enjoy a visit to a cenote or underground river, and discover its amazing limestone formations and stalactites. The crystal-clear water of the cenote encourages you to take a refreshing swim! The last stop on today's excursion will be to Valladolid, a typical Mexican colonial town. While here, take a brief tour of town's impressive cathedral, the main plaza and the colorful Mexican market. Included are transportation in air conditioned van, lunch, entrance fees, English and Spanish speaking tour leader, and guide service in Chichen Itza. Drinks are not included.

Another full day excursion will visit Tulum, the only Mayan ruin overlooking the turquoise Caribbean Sea. You can take a swim in the sea next to the temples. An official guide gives you an explanation about the history of the archaeological site. The walled fortress city of Tulum came into prominence as a seaport in the 13th century during the final years of the Mayan civilization and remained inhabited well after the arrival of the Spanish. Lunch will be included en route. Included are transportation in air conditioned van, lunch, entrance fees, English and Spanish speaking tour leader, and guide service in Tulum. Drinks are not included.

A full-day excursion is planned to the archaeological ruins of Coba, both older than most of Chichen Itza and much larger than Tulum. Coba was the dominant city of the Eastern Yucatan before A.D. 1000, but now its impressive ruins are interspersed with lush jungle vegetation. An official guide will give you an explanation about the history of the archaeology site. Hike the jungle to discover the lost temples of the Maya. The walk takes you "off the beaten path". Lunch will be included en route. Also enjoy a visit to a cenote for a refreshing swim! The excursion will conclude with a stop at Punta Laguna Monkey Preserve, where you will experience a hike in the jungle in search of the region's famous spider monkeys in one of their last rainforest sanctuaries. Included are transportation in air conditioned van, lunch, entrance fees, English and Spanish speaking tour leader, and guide service in Coba. Drinks are not included.

DAY 23 – Wednesday, July 8:

Cancun – San Francisco

Breakfast included at home stay. Morning is at leisure. The group will be transferred from El Estudiante to the Cancun airport for a mid-afternoon departure for San Francisco, changing planes en route in Mexico City. A late evening arrival is planned.

El Estudiante and Playa del Carmen

El Estudiante

"El Estudiante" is located right in heart of Playa Del Carmen's main pedestrian zone. It is the perfect learning environment with the bright-white beach and the blue ocean next door. The school is managed by an experienced international team. Classes are held in classrooms with air conditioning, in our tropical garden and on our large terrace with sea view.

Your Accommodations

Living with a Mexican family is the best way to improve your Spanish skills and to learn about the Mexican culture at the same time. The families live usually within approximately 15 minutes by foot from the school, though there is also the opportunity to rent a bicycle, should you wish. All of our families are carefully handpicked and provide breakfast and dinner as well.

Playa del Carmen

Playa del Carmen offers the chance both further your education and to make use of the beach and the fabulous weather all at the same time. This friendly idyllic town is right by the turquoise Caribbean with its typical narrow shopping streets and small corner shops. The former fishing village has taken on modern influences and yet kept its traditional customs - an ideal environment to learn Spanish and enjoy the Mexican culture. Activities like water sports including scuba diving, snorkeling, kite surfing and fishing are available.





The Program Price Includes

1. Round-trip air, via Mexicana, San Francisco/Cancun, including all current taxes and fuel surcharges (\$100.00 as of Sept. 08).
2. 21 nights home stay accommodation on a share twin basis including daily breakfast AND dinner with the host family.
3. Roundtrip private transfers from the Cancun Airport to El Estudiante Language Institute.
4. Usage of classroom for Anthropology Course.
5. Roundtrip transfer from El Estudiante to home stay with the host family. (could be by walking, driving or public transportation).
6. (3) Excursions to Tulum, Coba and Chichen Itza by private, air-conditioned motorcoach or mini-bus with local guide.
7. One class per week each of salsa dancing and cooking class.
8. Travel Guard Travel Insurance. This insurance policy covers travel delay, missed connection, baggage and personal effects loss, baggage delay, medical expenses and emergency medical transportation. Additional optional cancellation insurance available at a nominal cost.

PROGRAM PRICE DOES NOT INCLUDE:

- Gratuities for motorcoach driver and guides on excursions (minimal cost).
- Course registration fees, unit costs, and textbooks.
- Personal expenses such as passport.
- All other items not listed under "Program Price Includes."



Courses

ANTHROPOLOGY 121:

Introduction to Cultural Anthropology

This course positions culture as a key concept for understanding diverse ways of life both internationally and in American communities. Primary anthropological methods and concepts of kinship, gender, ethnicity, race and class will be explored as formative elements of society and culture. Through analyzing the intersections between global processes and identity-making, this class will explore what it means to be "American," as well as to be human, in the contemporary world. Transfers to CSU, UC. Meets the NVC multicultural/gender studies requirement. (3 units)

ANTHROPOLOGY 298:

International Field Studies in Anthropology

This course is designed for students participating in Napa Valley College International Education Programs in Anthropology. Topics include the major theories and approaches used in cultural anthropology; introductory fieldwork methods; and analysis of ethnographic and country-specific research in cultural anthropology. (3 units)



Prices

Prices are based on current (2009) agreements with suppliers of services such as hotels, airlines and others. Prices are based on the current (September 2008) exchange rate, \$1.00 USD = 10.85 Mexican Pesos. Prices are subject to change.

The price is based on a minimum of 12 paying participants.

Share Twin:

\$2280

Single Supplement:

\$150

General Information & Conditions:

RESERVATIONS & PAYMENTS:

Deposit required to register \$500 for this tour/program: (paid online)
Balance due: April 15, 2009
To find out how and to what extent your deposit/payment can be protected at no additional cost to you, see the section captioned 'National City® Travel Funds Protection Plan' elsewhere in this brochure.

CANCELLATIONS: All cancellations must be submitted in writing to Tour Resource Consultants, are subject to the terms of the Agreement for Services with your educational institution. The cancellation date is the date on which Tour Resource Consultants receives the signed written notification of the intent to cancel at its place of business.

Date of Cancellation Cancellation Charges
Until April 15, 2009 \$500*
April 16-May 15, 2009 \$1000*
May 16, 2009 - Departure No Refund
*In addition to these fees, any cancellation charges imposed by the airlines or other suppliers of travel services will be assessed.

REFUNDS:

All refunds will be based upon the cancellation schedule provided above. No refunds will be made until payments are recovered by Tour Resource Consultants from its suppliers. No refunds will be made on any services, meals or accommodations resulting from a participant's absence from the tour itinerary or from the non-utilization of these program components by the participant.

TOUR PRICES:

All rates, quoted in U.S. dollars, are based upon the exchange rate reflected in the group's tour proposal. The tour price will be adjusted if group airfare reservations, air taxes/fuel surcharges, international tariffs or currency exchange rates are revised.

TRAVEL DOCUMENTS:

U.S. citizens are required to possess a valid passport for international travel. In some instances visas may be required. Holders of U.S. passports and passports of countries other than the United States should inquire about individual visa requirements from the consular offices of the countries in which they will be traveling. Tour Resource Consultants does not assume responsibility for obtaining passports or visas, nor responsibility if participants do not acquire the required documentation and must cancel participation in the program as a result. Cancellation fees stated above will still apply.

AIR DEVIATIONS:

Under certain circumstances, land and air deviations from the tour itinerary may be available. A deviation fee of \$100, PLUS the cost of the change, must be paid at time of request. Once you have registered at our website, <http://www.tourresource.com>, more information is available in the member's area on the link "Deviations."

PROPERTY DAMAGES:

Any damages to homestay, apartment or hotel premises will be the sole responsibility of the tour participant and participant agrees to indemnify and hold Tour Resource Consultants LLC harmless from such claims and damages.

ONLINE REGISTRATION:

Updated itineraries and important notices for your tour will be posted on the TRC website www.TourResource.com on a secure website specifically for this program. Please ask your study abroad administrator, professor or group leader for the unique tour code for this program. With this unique tour code, tour participants will then register securely online and make payments online at www.tourresource.com via credit card, debit card, or e-check, at no supplemental cost to the participant. The secure members area for your group will be accessible only to registered members of this tour. Once logged in to the secure members area you may view the updated itinerary and other important announcements and information about the tour. Please note that each website user must have their own email address. More details are available upon request.

MORE DETAILS OF INSURANCE INCLUDED IN TOUR PACKAGE

A basic travel insurance group policy covering medical emergencies, lost or delayed baggage, and emergency assistance is included in the land-only tour price. It is provided by a third-party insurance provider. Please note: this is not trip cancellation insurance. The specific coverage details are:

\$750: Trip Delay

Reimburses you up to \$150 a day for additional accommodations or travel expenses if you are delayed for more than 12 hours due to a covered reason.

\$1,000: Baggage & Personal Effects

Reimburses you if your luggage is lost, damaged, or stolen while you are on your trip.

\$250: Baggage Delay

Reimburses you for the purchase of essential items if your bags are delayed for more than 24 hours.

\$25,000: Medical Expenses

Covers necessary medical expenses up to one year after the sickness or injury, provided initial treatment was received while on the trip.

\$250,000: Emergency Medical Evacuation

Covers evacuation and transportation to the nearest adequate medical facility.

\$25,000: Accidental Death & Dismemberment

Pays for loss of life or limb if occurs within 365 days of an accident during the Insured's trip.

Travel Guard Assist

Offers emergency assistance for your peace of mind anywhere in the world, including:

- advancement of funds to cover on-site medical expenses,
- telephone interpretation services in major languages,
- replacement of lost passport,
- assistance to locate local physicians, dentists or medical facilities,
- professionals to monitor your condition and contact your personal physician,
- evacuation to a hospital treatment facility or back home;
- 24-hour emergency hotline.

LiveTravel

24-hour hotline to track lost luggage and more!

Live messaging

Relay of any e-mail or phone message to family, friends or business associates

Emergency Cash transfers

Assistance in coordinating an emergency cash advance.

Pre-trip travel advisories

Around-the-clock access to passport, visa, inoculation and vaccine requirements; travel advisories; embassy and consulate contacts; travel health advisories; weather and currency information, all for your planned destination.

NATIONAL CITY® TRAVEL FUNDS PROTECTION PLAN

Effective August 1, 2008, Tour Resource Consultants LLC is a participant in the National City® Travel Funds Protection Plan ("Plan"). The Plan offers the opportunity to place your deposit/payment into an escrow account maintained by the Trust and Financial Services Division of National City Bank ("NCB"). NCB is a banking subsidiary of National City Corporation, whose shares are traded on the New York Stock Exchange.

True Escrow Protection.

Tour Resource Consultants LLC has voluntarily agreed to deposit 100% of all cash, check or credit card payments received by the Tour Operator from you or your group directly into the NCB escrow account. This means that such funds will be separate from the operating funds of Tour Resource Consultants LLC. The Plan differs from some so-called escrow agreements where a tour operator opens a bank account in its own name as trustee. At the request of the Escrow Agent Tour Resource Consultants LLC has also agreed to allow an independent Certified Public Accountant to review its financial receipts records for various dates randomly selected by the CPA during the prior year. You or your travel agent may obtain a copy of the CPA's report upon delivery of a written request to Escrow Agent.

How Deposits/Payments received are Protected under the Plan.

When NCB receives your funds, they will be deposited into a NCB escrow account. If Tour Resource Consultants LLC is providing air transportation on a scheduled air carrier as a part of the tour package, NCB will pay the air carrier for your ticket in advance of your scheduled departure date in accordance with the instructions of the Tour Operator. After your scheduled return date according to NCB's records (and after the Tour Operator should have rendered the services to you), NCB will deliver the remaining funds to Tour Resource Consultants LLC and/or providers of travel services. In the unlikely event that the air carrier or the Tour Operator defaults or ceases to operate, you must file a refund claim with NCB for that portion of your funds which are still in the escrow account. Your claim must be filed as soon as possible but no later than 2 business days after your scheduled return date.

What is not protected under the Plan.

The Plan does not protect you or any provider of travel services from loss (monetary or otherwise) resulting from the following:

- Your cancellation or interruption of your trip for any reason including death, injury, illness of you or a family member.
- Any delays in delivering any of the travel services.
- Any disputes involving the Tour Operator or any provider of travel services regarding the type or quality of services promised or rendered.
- Funds (including credit card payments) not received and collected by NCB.
- Travel agent payments through a miscellaneous charge order (MCO) unless Tour Resource Consultants LLC advances its own funds into the NCB escrow account to cover the MCO or the proceeds of the MCO are received by NCB prior to the date of your departure.
- Failure of you or your travel agent to make a timely claim for a refund in the unlikely event of a default by the airline or Tour Operator.
- The air carrier ceases to operate after NCB has paid for your airline ticket.
- The payment of funds to your travel agent for services not provided by Tour Resource Consultants LLC, including in some cases, airline tickets.
- Various types of travel insurance programs are available to protect you from some of the above losses. The Plan does not guaranty payment to any party which provides travel services to you.

Plan Summary.

This is only a summary of the Plan. The obligations of NCB with respect to deposits/payments received by NCB are governed solely by the terms of an Escrow Agreement by and between Tour Resource Consultants LLC and NCB.

Effective until December 31, 2009

For More Information,
Please Contact:

JESSICA V. AMATO

Anthropology Instructor

Napa Valley College

2277 Napa-Vallejo Highway

Napa, CA. 94558

(707) 253-3183

jamato@napavalley.edu

Tour Resource Consultants LLC is a participant in the 'National City® Travel Funds Protection Plan'



8080 La Mesa Blvd, Suite 105

La Mesa, CA 91941

Phone: (619) 567-6830

Fax: (619) 567-5157

Toll-Free: (888) 847-6951

Email: jim@tourresource.com

Website: www.tourresource.com

CST# 2093740-40. This Seller of Travel is not a participant in the California Travel Consumer Restitution Fund.